

Towing hitch accessories:

Pos. 1 Name: Main bar Quantity: 1	Pos. 5 Name: Right bracket Quantity: 1	Pos. 10 Name: Bolt 8,8 B Quantity: 1 Dim.: M10x75mm	Pos. 16 Name: Plain washer Quantity: 6 Dim.: \varnothing 13 mm
Pos. 2 Name: Tow ball Quantity: 1	Pos. 6 Name: Plate Quantity: 2 Dim.: 150x120x4mm	Pos. 11 Name: Bolt 8,8 B Quantity: 4 Dim.: M12x35mm	Pos. 17 Name: Plain washer Quantity: 9 Dim.: \varnothing 10,5 mm
Pos. 3 Name: Socket plate Quantity: 1	Pos. 7 Name: Slot Quantity: 2 Dim.: 130x25x3mm	Pos. 12 Name: Bolt 8,8 B Quantity: 4 Dim.: M10x40mm	Pos. 18 Name: Spring washer Quantity: 6 Dim.: \varnothing 12,2 mm
Pos. 4 Name: Left bracket Quantity: 1	Pos. 8 Name: Cut washer Quantity: 2 Dim.: \varnothing 58x \varnothing 13x10mm	Pos. 13 Name: Bolt 8,8 B Quantity: 4 Dim.: M10x30mm	Pos. 19 Name: Spring washer Quantity: 9 Dim.: \varnothing 10,2 mm
	Pos. 9 Name: Bolt 8,8 B Quantity: 2 Dim.: M12x70mm	Pos. 14 Name: Nut 8 B Quantity: 4 Dim.: M12	Pos. 20 Name: Ball cover Quantity: 1
		Pos. 15 Name: Nut 8 B Quantity: 9 Dim.: M10	



PPUH AUTO-HAK Sp.J.

Produkcja Zaczepów Kulowych
Henryk & Zbigniew Nejman
76-200 SŁUPSK ul. Słoneczna 16K
tel/fax (059) 8-414-414; 8-414-413
E-mail: office@autohak.com.pl
www.autohak.com.pl

Towing hitch (without electrical set)

Class: **A50-X** Cat. no. **W13**

Designed for:

Manufacturer: **SUZUKI**

Model: **SWIFT**

Type: **3/5 doors, except 4WD**

produced since 03.1989 till 09.1996 and
since 10.1996 till 10.2003

Technical data:

D-value: 5,45 kN

maximum trailer weight: **1000 kg**

maximum vertical cup load: **50 kg**

Approval number acc. to regulations EKG/ONZ 55.01: **E20-55R-01 1028**

Foreword

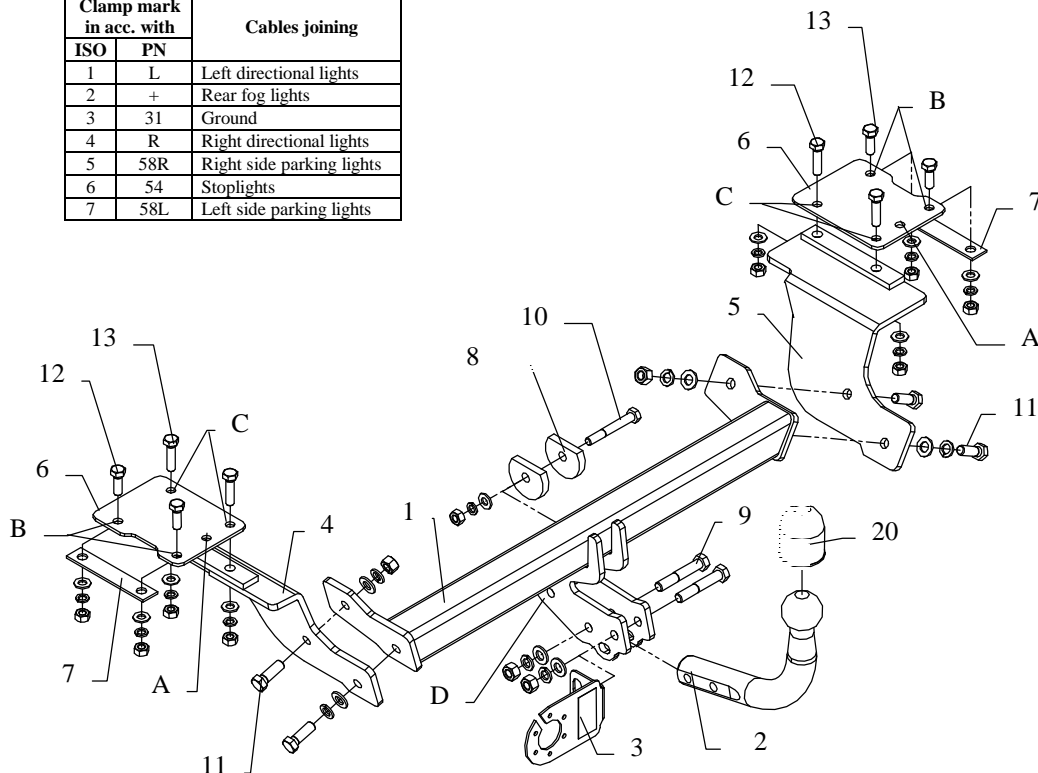
This towing hitch is designed according to rules of safety traffic regulations. The towing hitch is a safety component and can be installed only by qualified personnel. Any alteration or conversion of the towing hitch is prohibited and would lead to cancellation of design certification. Remove insulating compound and underseal from vehicle (if present) in the area of the matting surfaces of the towing hitch. The vehicle manufacturer's specifications regarding trailer mass and max. vertical cup mass are decisive for driving whereat values for the towing hitch cannot be exceeded.

D-value formula:

$$\frac{\text{Max trailer weight [kg]} \times \text{Max vehicle weight [kg]}}{\text{Max trailer weight [kg]} + \text{Max vehicle weight [kg]}} \times \frac{9,81}{1000} = D \text{ [kN]}$$

FITTING INSTRUCTION

Clamp mark in acc. with		Cables joining
ISO	PN	
1	L	Left directional lights
2	+	Rear fog lights
3	31	Ground
4	R	Right directional lights
5	58R	Right side parking lights
6	54	Stoplights
7	58L	Left side parking lights



This towing hitch is designed to assembly in following cars: **SUZUKI SWIFT, 3/5 doors, except 4WD**, produced since 03.1989 till 09.1996 and since 10.1996 till 10.2003, catalogue no. **W13** and is prepared to tow trailers max total weight **1000 kg** and max vertical load **50 kg**.

From manufacturer

Thank you for buying our product. Their reliability has been confirmed in many tests. Reliability of towing hitch depends also on correct assembly and right operation. For this reasons we kindly ask to read carefully this instruction and apply to hints.

The towing hitch should be install in points described by a car producer.

The instruction of the assembly

1. Disassemble the bumper.
2. Take out the noise mat from the boot.

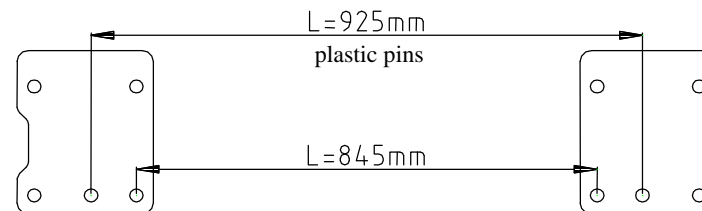


Fig.2 Element's distance

3. On the left and right side in the boot are plastic pins (diameter 11 mm). On this pins put elements pos. 6 (check position of hole A) – see fig. 2. Next drill holes through holes pos. B and C, use bit $\varnothing 11$ mm, drill straight through.
4. Put bolts M10x40 through holes (pos. C) in element pos. 6 and next from below of car put element (pos. 4) from the left side (fix loosely), from the right side put element (pos. 5) - fix loosely too.
- to easier install get lower the muffler (take off from rubber handles)
5. Through holes pos. B (in elements pos. 6) put bolts M10x30 and fix them with floor and element (pos. 7).
6. In this way prepared elements (pos. 4 and 5) put main bar of the towbar (pos. 1) and fix it using bolts M12x30 (loosely).
7. Through holes (pos. D) fix with original tow handle using distance plain washers $\varnothing 58 \times \varnothing 12 \times 6$ (pos. 8).
8. Fix all bolts according to the torque shown in the table.
9. Reassemble the bumper after cut out required fragment in bottom edge.
10. Fix tow-ball (pos. 2) and socket plate (pos. 3) using bolts M12 x 70mm (pos. 9) from equipment.
11. Connect electric wires according to the instruction of the car. (Recommend to make at authorized service station)
12. Complete the paint coating damaged during installation.

Torque settings for nuts and bolts (8,8):

M 8 - 25 Nm

M 10 - 55 Nm

M 12 - 85 Nm

M 14 - 135 Nm

NOTE

After install the towbar you should get adequate note in registration book (at authorised service station). The car should be equipped with:

- Indicators
- Tow mirrors

After 1000km check all bolts and nuts. The ball of towbar must be always kept clear and conserve with a grease.